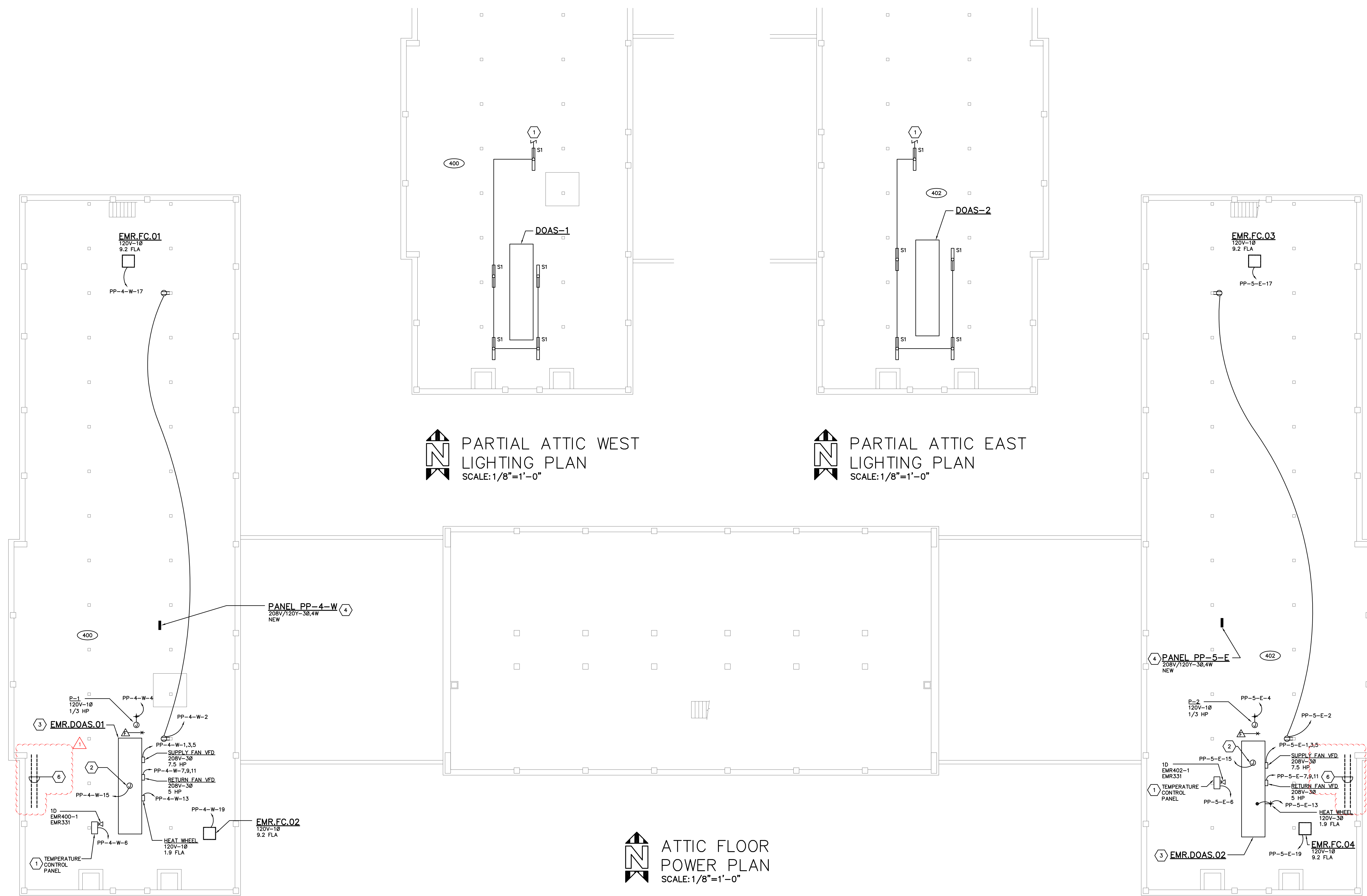


GENERAL NOTES

- A. UNLESS NOTED OTHERWISE, ALL EQUIPMENT, DEVICES, WIRING AND CONDUIT IS EXISTING TO REMAIN.
- B. COORDINATE EARLY IN THE PROJECT FOR THE EXACT PATH OF THE NEW BRANCH CIRCUITS AND PANELBOARD FEEDERS. ELECTRICAL DRAWINGS DO NOT REPRESENT ALL THE EXISTING OR NEW MECHANICAL SYSTEMS WITHIN THE SPACE. COORDINATE WITH THE EXISTING MECHANICAL CONDITIONS, STRUCTURE, AND ALL OTHER TRADES PRIOR TO ROUGH-IN. PROVIDE ALL NECESSARY OFFSETS AND JUNCTION BOXES FOR A COMPLETE CONDUIT SYSTEM.
- C. SURFACE MOUNTED RACEWAYS INDOORS SHALL BE "EMT" TYPE CONDUIT. ALL SURFACE MOUNTED RACEWAYS SHALL BE RUN PARALLEL AND PERPENDICULAR TO BUILDING WALL AND CEILING. FIELD COORDINATE ALL SURFACE RACEWAY PATHS AND DROPS WITH THE EXISTING CONDITIONS AND OTHER TRADES PRIOR TO ROUGH-INS.
- H. ALL NEW DATA CABLING SHALL BE CAT 6. COORDINATE FINAL LOCATION IN TR RACK WITH UNIVERSITY IT DEPARTMENT.

CODED NOTES

- 1. EXTEND EXISTING LIGHTING CIRCUIT TO THE NEW LIGHTING FIXTURES. MINIMUM WIRE SIZE SHALL BE 2-#12 AND 1-#12 GROUND IN 3/4" CONDUIT.
- 2. PROVIDE 120V CONNECTION TO MECHANICAL EQUIPMENT'S INTEGRAL LIGHTS AND SERVICE RECEPTACLES. VERIFY EXACT LOCATION WITH EQUIPMENT SUPPLIER PRIOR TO ROUGH-IN.
- 3. MAKE POWER CONNECTION TO MECHANICAL EQUIPMENT'S POWER CONNECTION POINTS. THREE REQUIRED: ONE FOR SUPPLY AIR FANS, ONE FOR RETURN AIR FANS, AND ONE FOR HEAT WHEEL. FIELD VERIFY CONNECTION LOCATIONS PRIOR TO ROUGH-IN. FANS PRE-CIRCUITED TO CONTROL PANEL. PANEL INCLUDES WFD'S LABEL WFD'S MOR.DOAS.OX.VED.OX. WHERE X INDICATES THE DOAS NUMBER AND WFD NUMBER RESPECTIVELY.
- 4. PROVIDE UNISTRUT FRAME STRUCTURE TO MOUNT NEW PANEL TO.
- 5. PROVIDE 120V CONNECTION AND DATA OUTLET AT TEMPERATURE CONTROL PANEL FOR CONTROLLER NETWORK CONNECTION. COORDINATE WITH MECHANICAL CONTRACTOR FOR EXACT LOCATION PRIOR TO ROUGH-IN. EXTEND DATA TO EXISTING TR IN ROOM 331.
- 6. TEMPORARILY RELOCATE EXISTING CABLE-TRAY TO ALLOW INSTALLATION OF NEW DOAS UNITS.



PARTIAL ATTIC WEST LIGHTING PLAN
SCALE: 1/8"=1'-0"

PARTIAL ATTIC EAST LIGHTING PLAN
SCALE: 1/8"=1'-0"

ATTIC FLOOR POWER PLAN
SCALE: 1/8"=1'-0"

DATE	DESCRIPTION
3-24-22	ADDENDUM 2
3-4-22	ISSUED FOR BID AND PERMIT

H-104-21380.DWG
ASSOCIATE ENGINEER
PRATER Engineering Associates, Inc.
6130 Wilcox Road
Dublin, Ohio 43018
(614) 766 4886
FAX: (614) 766 2354

SEAL
STATE OF OHIO
DOUGLAS L. POWELL
E-57325
PROFESSIONAL ENGINEER
03/04/2022

MIAMI UNIVERSITY
EMERSON HALL
VENTILATION IMPROVEMENTS

PREPARED FOR
MIAMI UNIVERSITY
PHYSICAL FACILITIES DEPARTMENT
OXFORD, OH

PREPARED BY
PRATER ENGINEERING ASSOCIATES
6130 WILCOX ROAD; DUBLIN, OHIO 43016

SHEET TITLE: **ATTIC FLOOR POWER PLAN** SHEET NO.: **E-104**

SCALE: AS NOTED DATE: 03/04/2022 DESIGNED BY: N.GUY CHECKED BY: DLP