

GENERAL NOTES

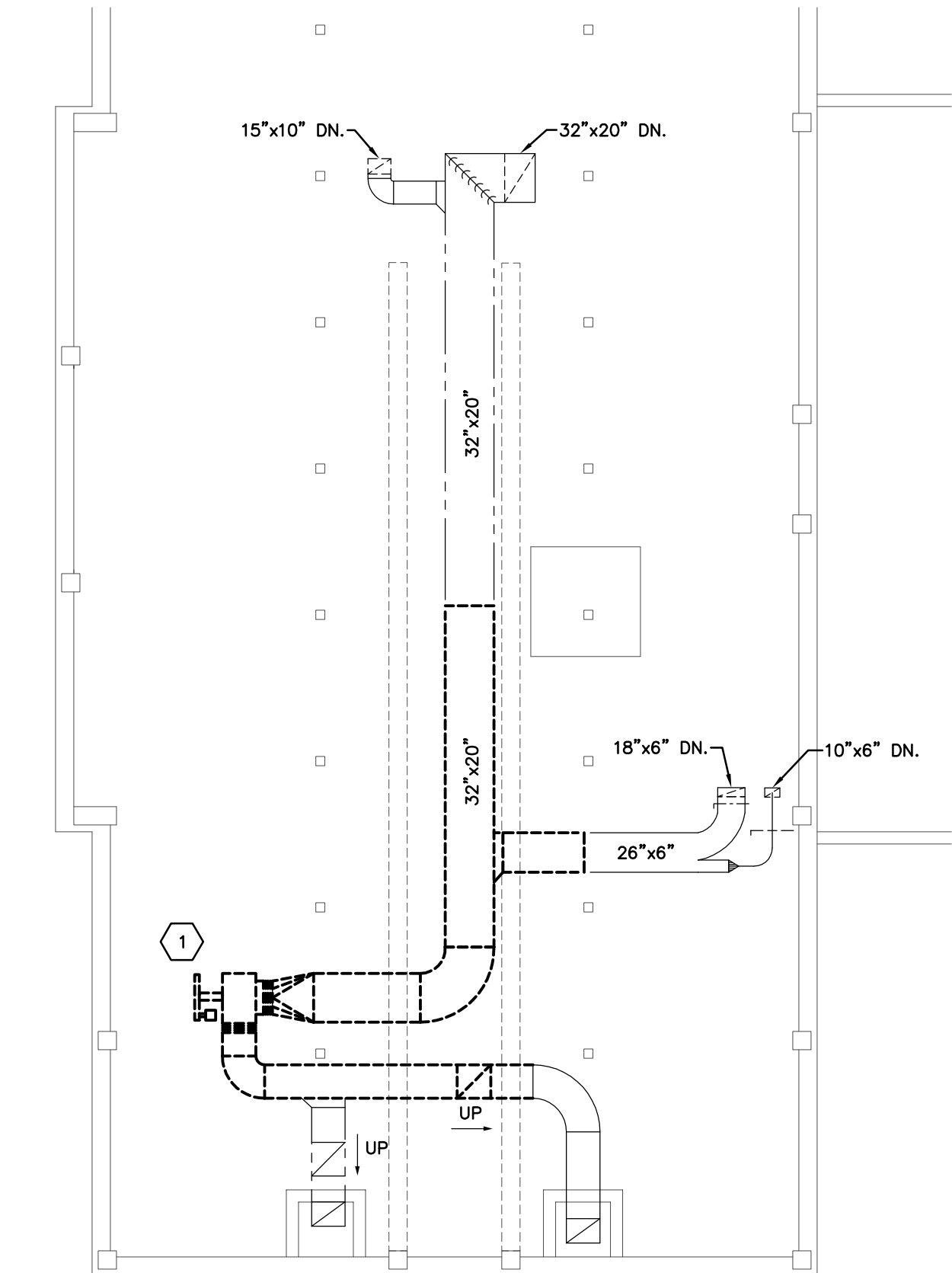
REMOVE EXISTING EXHAUST AIR DEVICES. CLEAN AND REINSTALL AFTER DUCT CLEANING IS COMPLETE. ALL EXISTING EXHAUST DUCTWORK SHALL BE INTERNALLY CLEANED BY THE HVAC CONTRACTOR. RE-BALANCE GRILLES TO CFM NOTED ON DRAWINGS.

CONSTRUCTION SEQUENCING

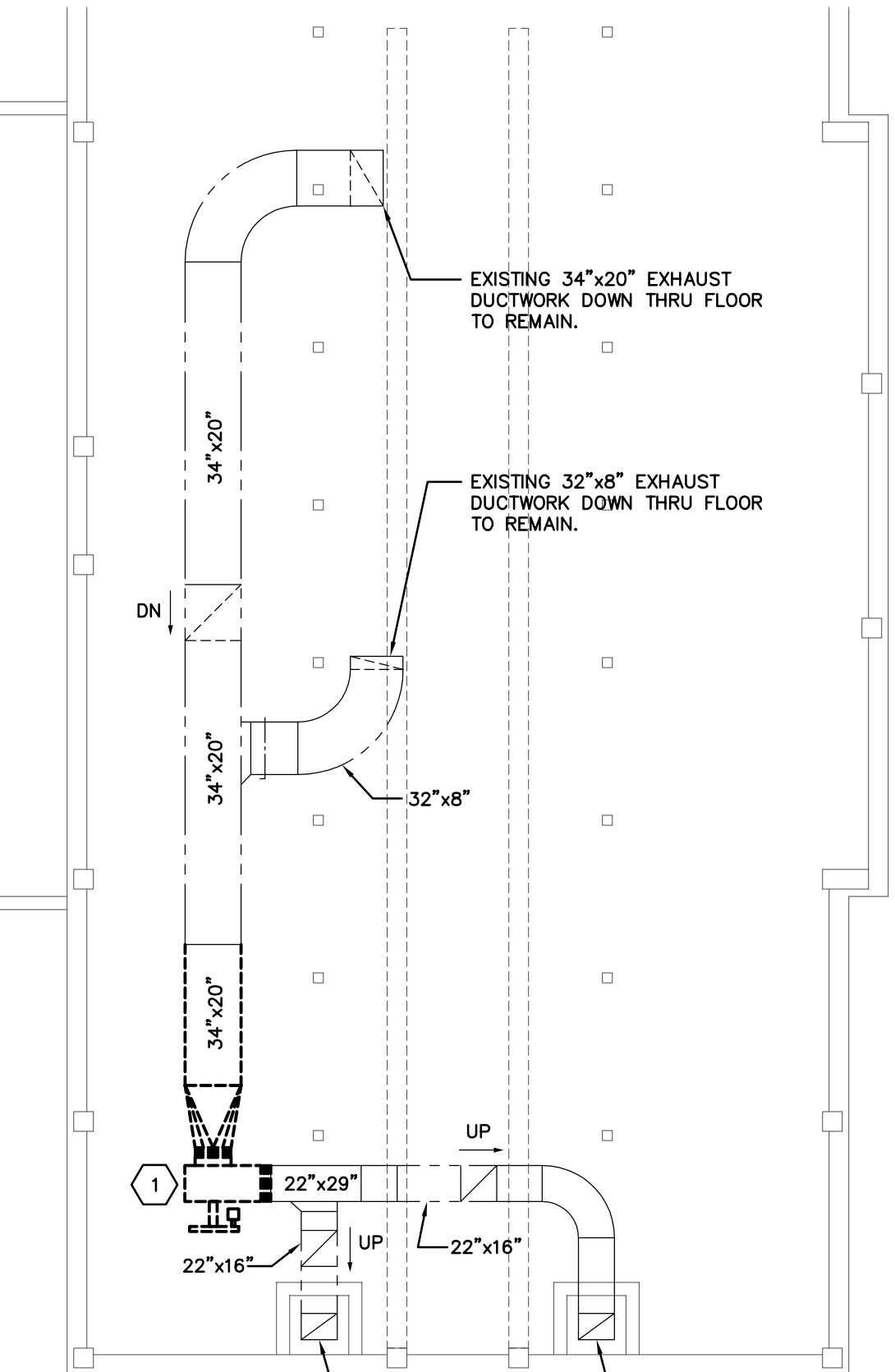
1. EXHAUST SYSTEMS SHALL BE MAINTAINED IN SERVICE UNTIL NEW DOAS UNITS ARE INSTALLED. SECTIONS OF EXIST. EXHAUST DUCTS MAY BE REMOVED TEMPORARILY TO INSTALL NEW DUCTS AND SYSTEMS BUT MUST BE ABLE TO BE REINSTALLED IF NEW DOAS UNITS ARE NOT INSTALLED AND OPERATIONAL BY JULY 22, 2022.

CODED NOTES

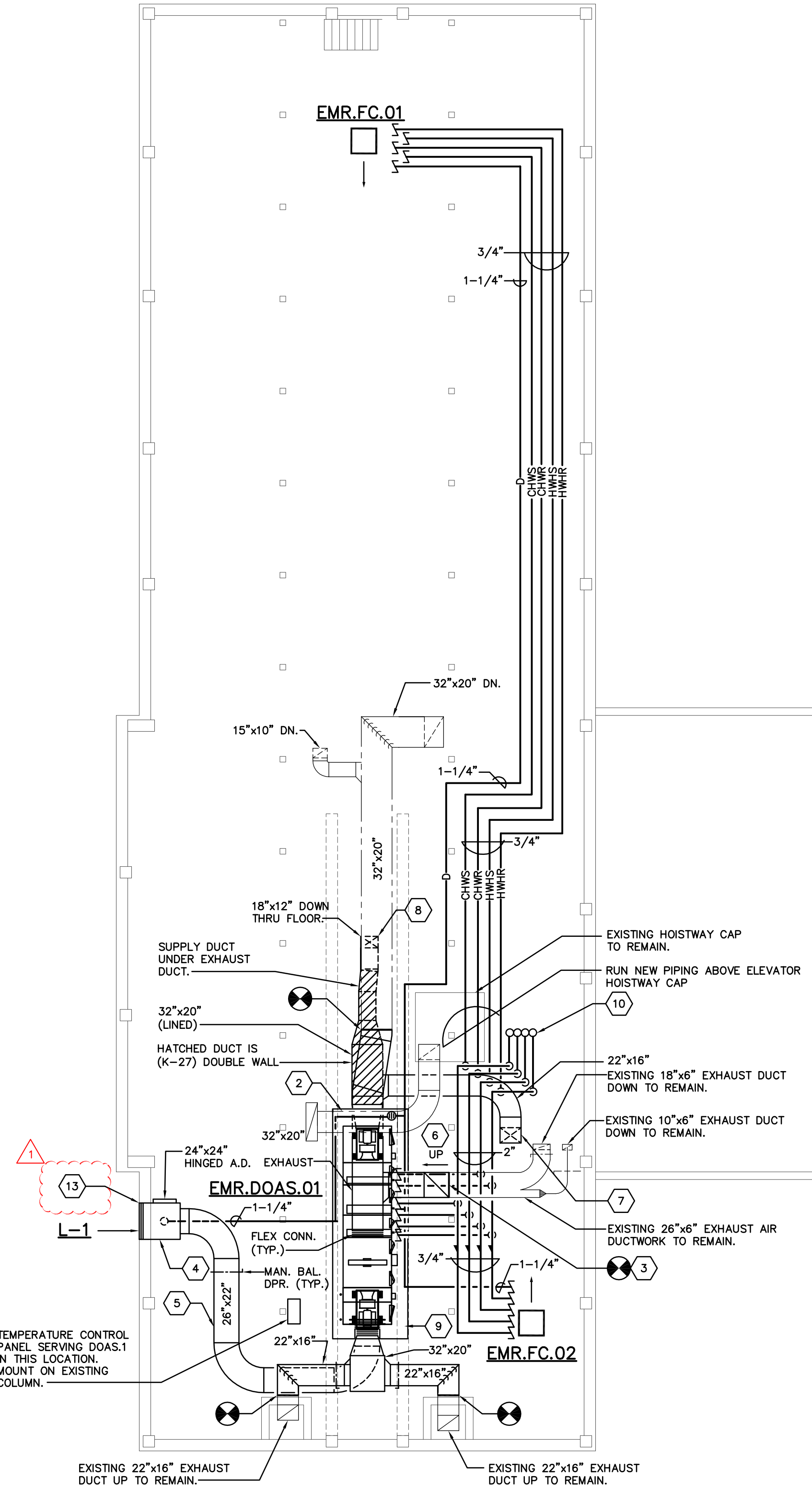
1. EXISTING UTILITY SET EXHAUST FAN TO BE REMOVED.
2. EXISTING ELEVATOR HOISTWAY VENTILATION DUCT TO REMAIN.
3. OFFSET UP AT 45° ANGLE. CONNECT TO NEW EXHAUST DUCT AT DOAS UNIT.
4. APPROXIMATELY 38" WIDE x 54" HIGH LOUVER IN EXISTING WINDOW OPENING. PROVIDE 30" DEEP PLENUM WITH 24"x24" ACCESS DOOR. BOTTOM TO BE SEALED WATER TIGHT WITH 1/4" DRAIN TO NEW AHU FLOOR DRAIN.
5. OUTSIDE AIR DUCT RUNS UNDER EXHAUST AIR. USE LONG RADIUS ELBOWS WHERE POSSIBLE.
6. SUPPLY AIR DUCT RUNS UNDER EXISTING EXHAUST DUCT & ELEVATOR HOISTWAY VENTILATION DUCT.
7. NEW 22"x16" SUPPLY AIR DUCT DOWN THRU FLOOR. PROVIDE FIRE DAMPER AT FLOOR PENETRATION. TRANSITION TO 28"x10" DUCT BELOW ATTIC FLOOR.
8. NEW 18"x12" SUPPLY AIR DUCT DOWN THRU FLOOR. PROVIDE FIRE/SMOKE DAMPER AT ATTIC PENETRATION. PROVIDE ACCESS DOOR AT PENETRATION.
9. 2-1/2" CONTAINMENT CURB AROUND UNIT. EPOXY PAINT UNDER UNIT AND ON ALL SIDES OF CONTAINMENT CURB STEEL. SHERWIN-WILLIAMS MACRO-POXY 646 OR EQUAL.
10. EXTEND PIPING DOWN THROUGH LINEN CLOSET.
11. RUN 1-1/4" DRAIN LINE FROM COOLING COIL/FAN COIL TO FLOOR DRAIN LOCATED WITHIN AIR HANDLING UNIT CONTAINMENT CURB.
12. EXTEND 1/4" DRAIN LINE FROM UNIT TO FLOOR DRAIN LOCATED WITHIN AIR HANDLING UNIT CONTAINMENT CURB.
13. TEMPORARILY REMOVE AND RELOCATE EXISTING DRY SPRINKLER PIPE TO ALLOW NEW AIR HANDLING UNIT SECTIONS BE INSTALLED. COORDINATE WITH MIAMI UNIVERSITY.



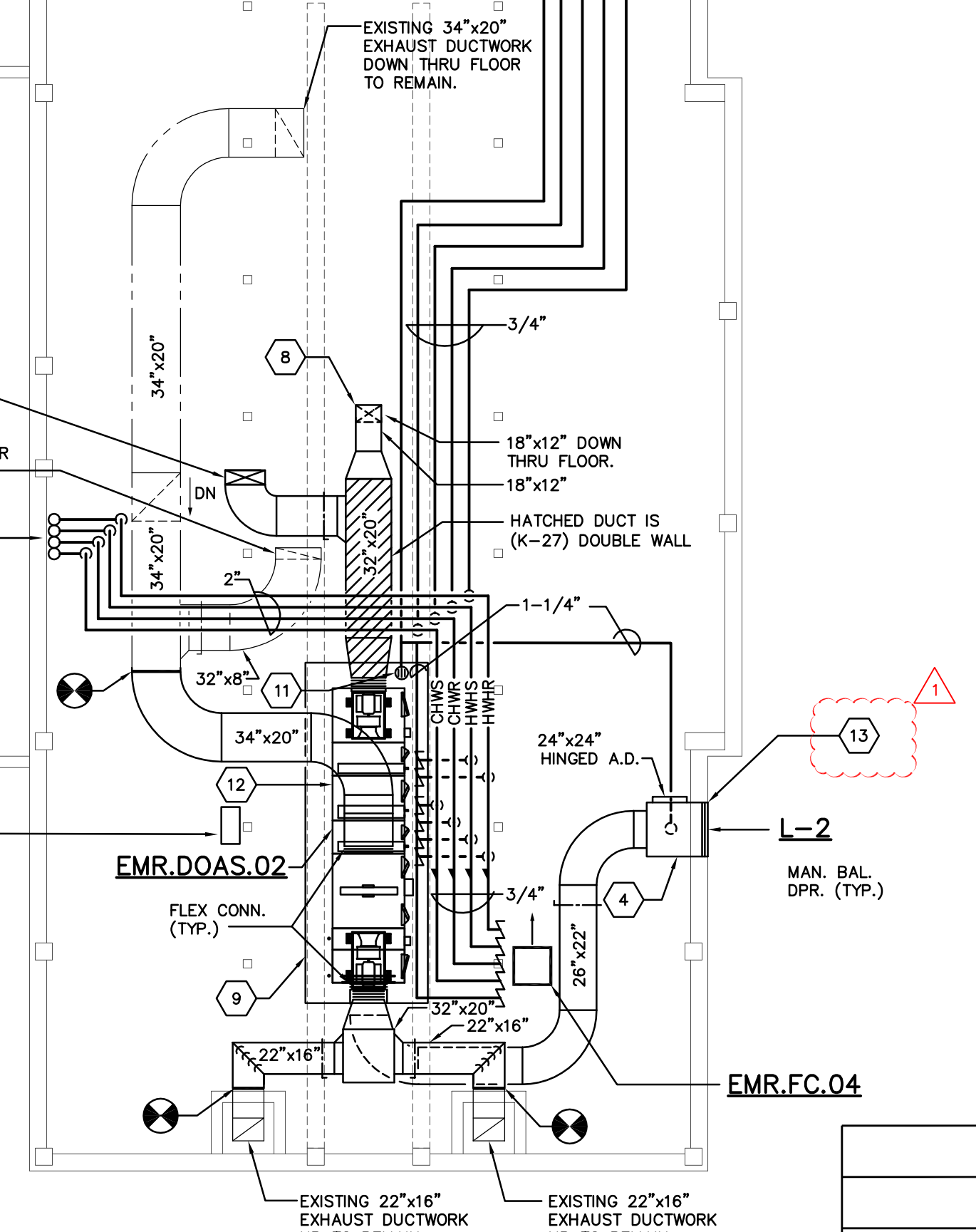
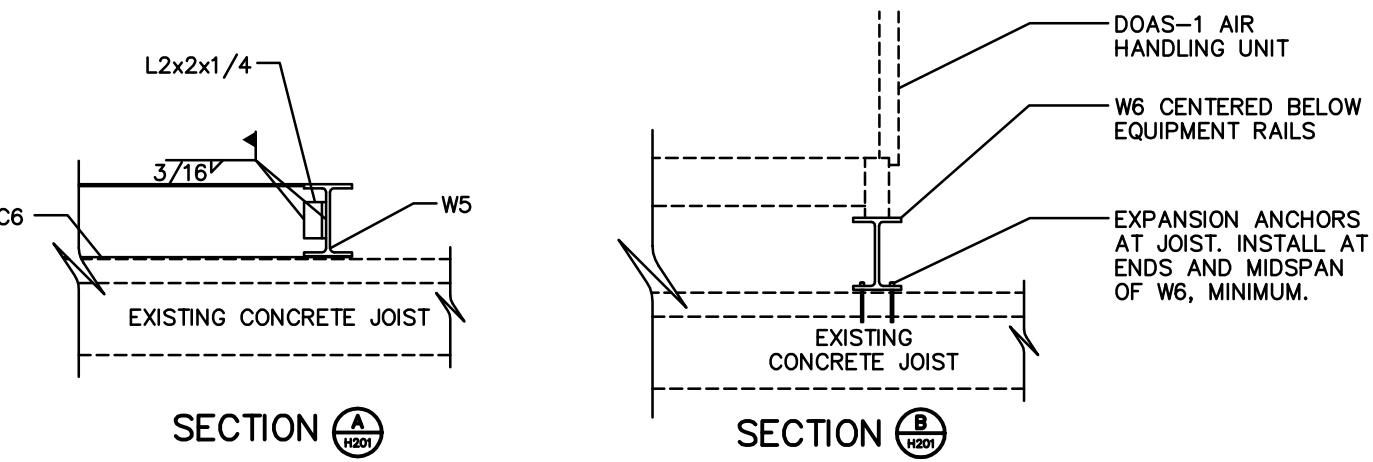
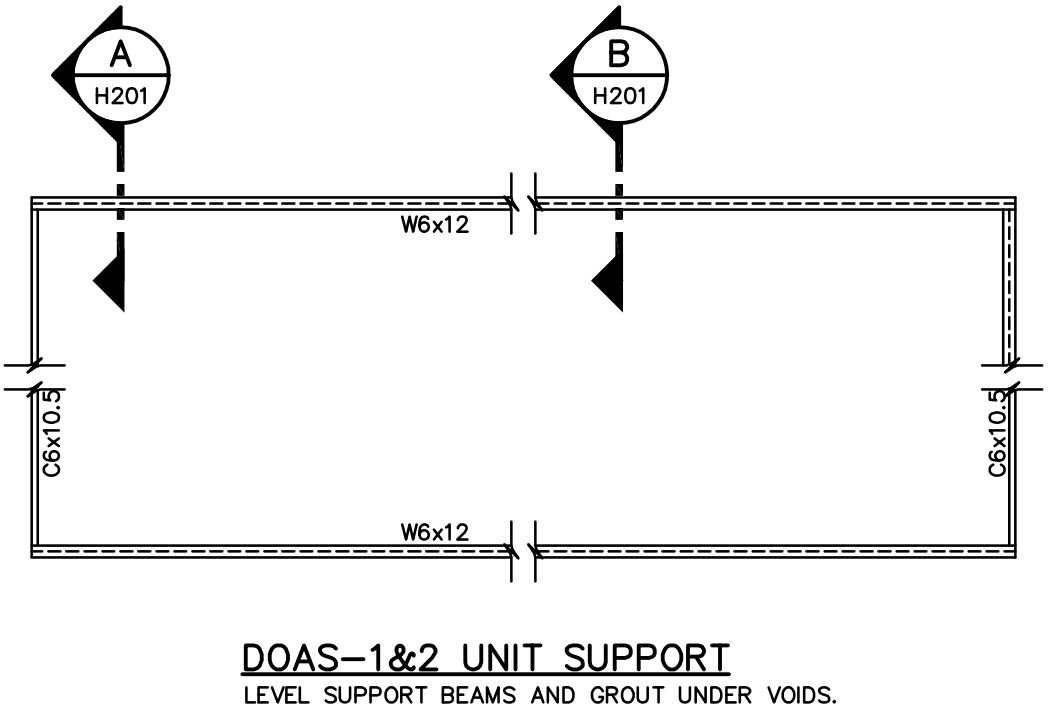
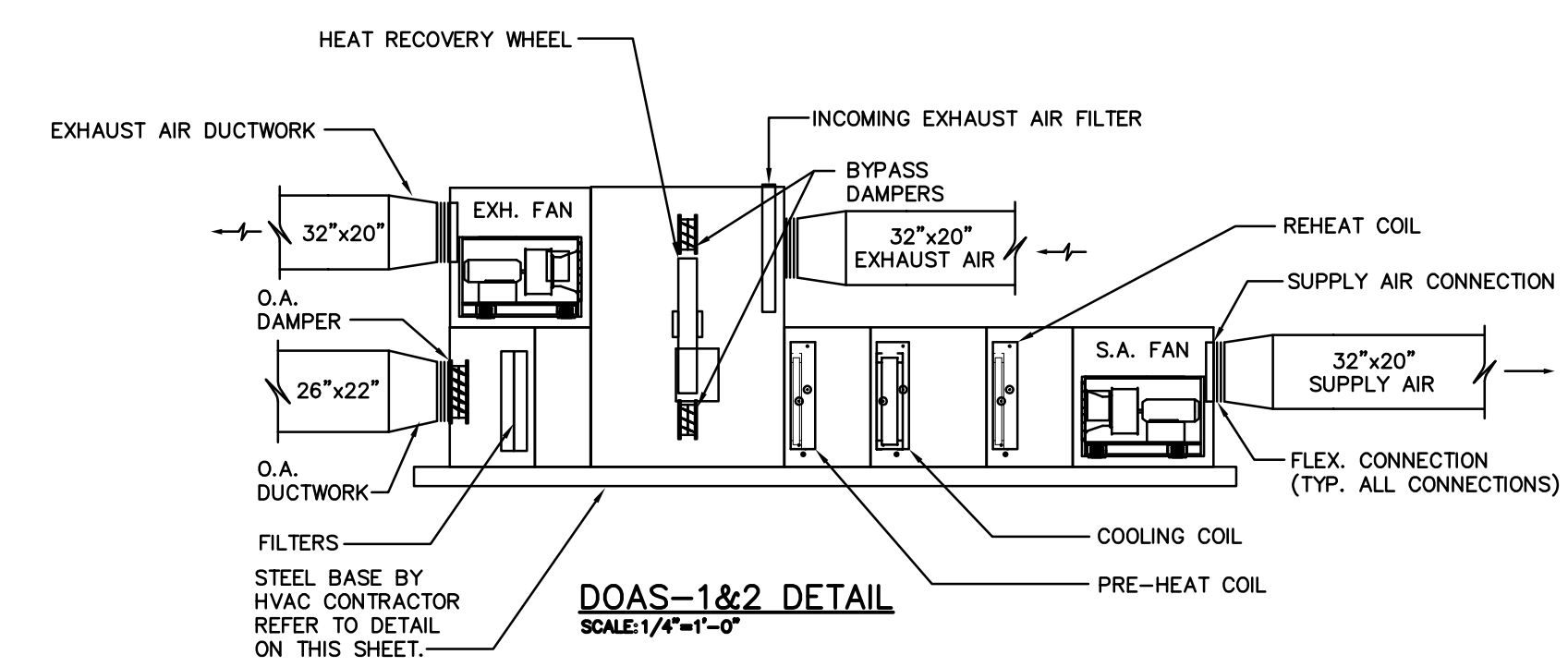
ATTIC WEST WING PARTIAL HVAC DEMO PLAN
SCALE: 1/8"=1'-0"



ATTIC EAST WING PARTIAL HVAC DEMO PLAN
SCALE: 1/8"=1'-0"

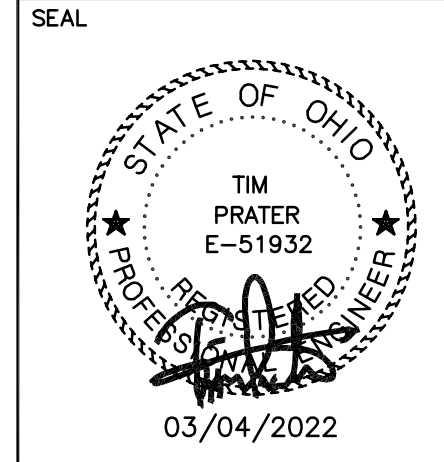


ATTIC FLOOR HVAC PLAN
SCALE: 1/8"=1'-0"



DATE	DESCRIPTION
3-24-22	ADDENDUM 2
3-4-22	ISSUED FOR BID AND PERMIT

H-104-21380.DWG
ASSOCIATE ENGINEER
PRATER Engineering Associates, Inc.
6130 Wilcox Road
Dublin, Ohio 43018 (614) 766 4886
FAX: (614) 766 2354



MIAMI UNIVERSITY
EMERSON HALL
VENTILATION IMPROVEMENTS

PREPARED FOR
MIAMI UNIVERSITY
PHYSICAL FACILITIES DEPARTMENT
OXFORD, OH
PREPARED BY
PRATER ENGINEERING ASSOCIATES
6130 WILCOX ROAD; DUBLIN, OHIO 43016

SHEET TITLE	ATTIC FLOOR HVAC PLAN	SHEET NO.
SCALE	AS NOTED	
DATE	03/04/2022	
DESIGNED BY	ARP	CHECKED BY
		TP

H-104