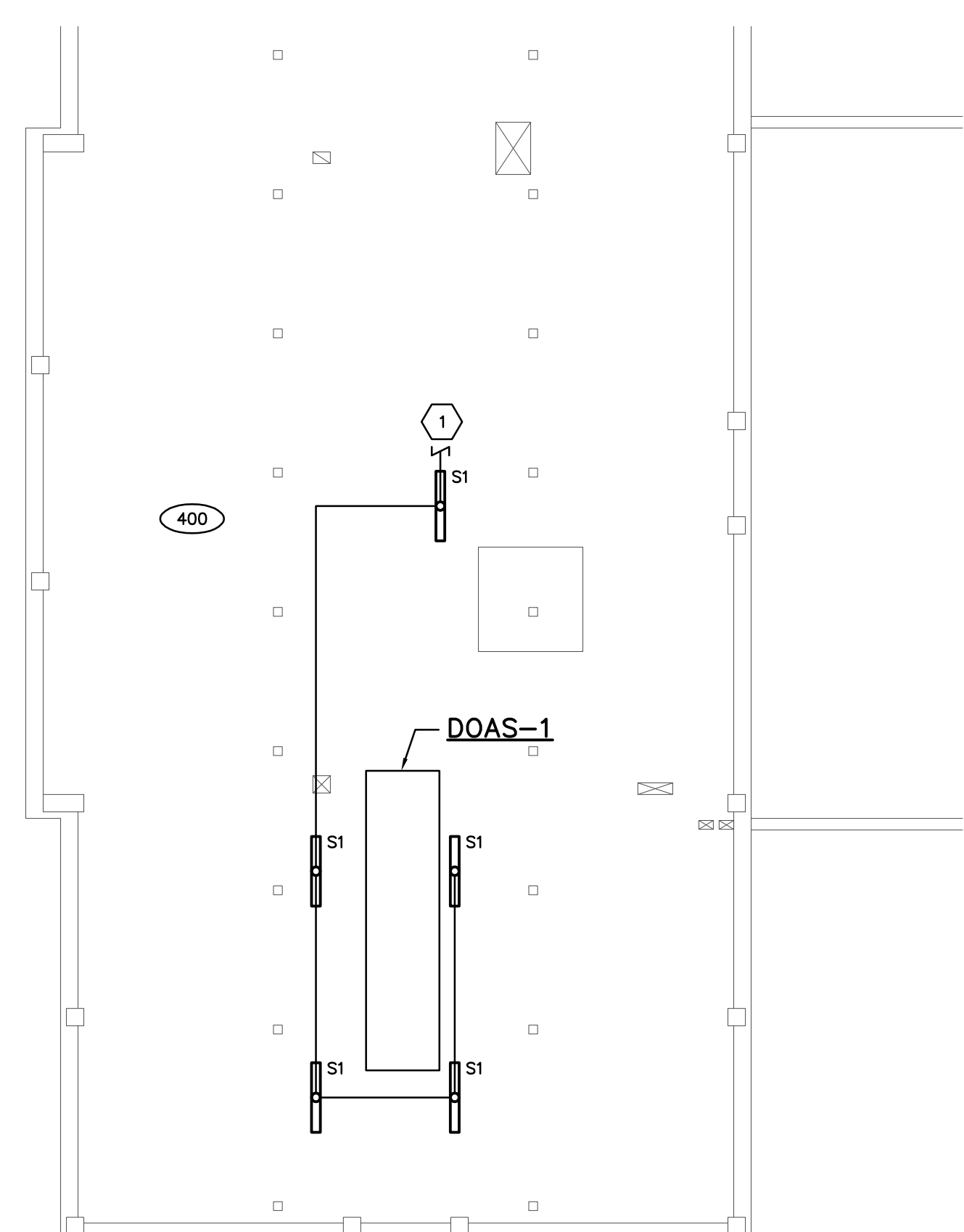


**GENERAL NOTES**

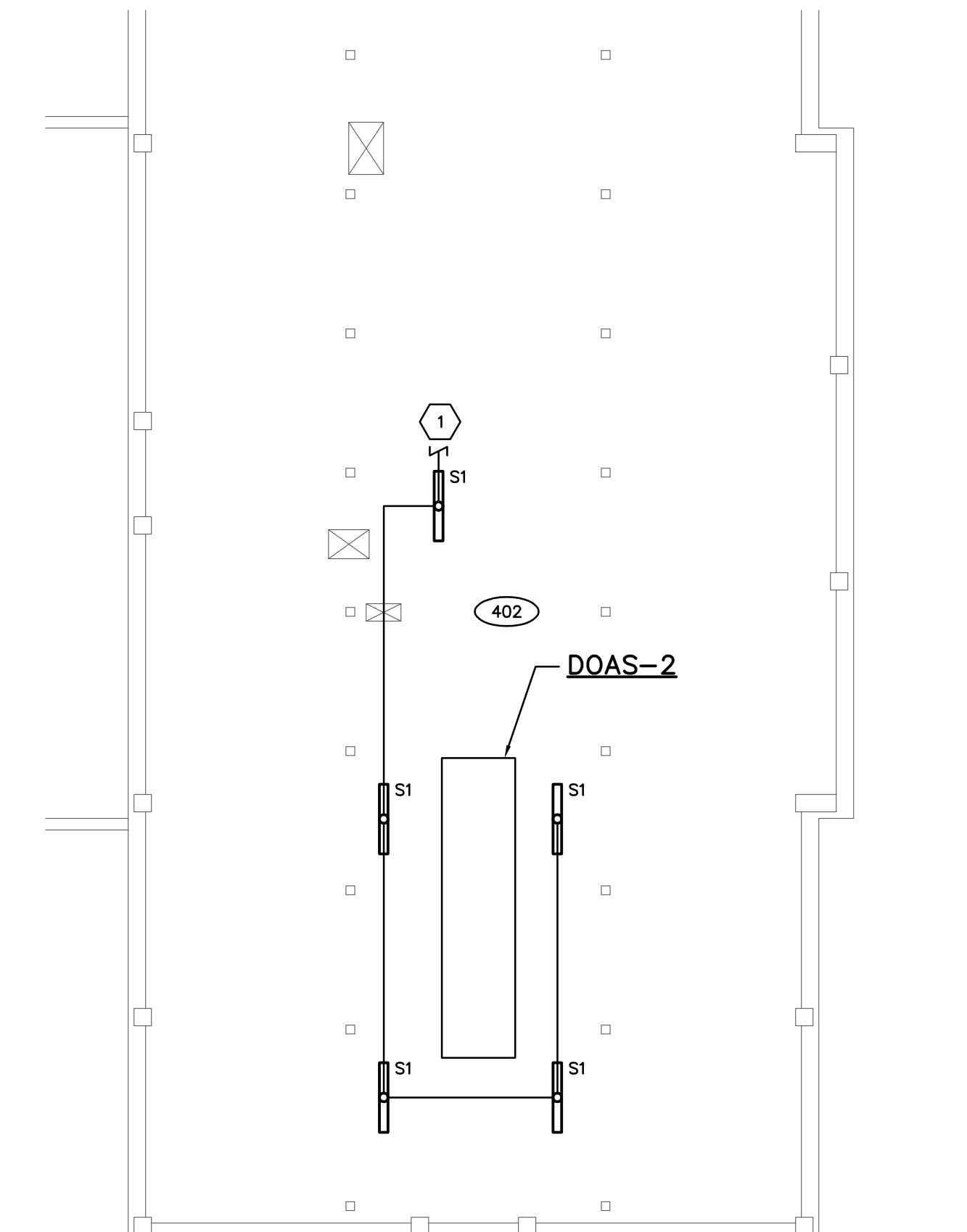
- A. UNLESS NOTED OTHERWISE, ALL EQUIPMENT, DEVICES, WIRING AND CONDUIT IS EXISTING TO REMAIN.
- B. COORDINATE EARLY IN THE PROJECT FOR THE EXACT PATH OF THE NEW BRANCH CIRCUITS AND PANELBOARD FEEDERS. ELECTRICAL DRAWINGS DO NOT REPRESENT ALL THE EXISTING OR NEW MECHANICAL SYSTEMS WITHIN THE SPACE. COORDINATE WITH THE EXISTING MECHANICAL CONDITIONS, STRUCTURE, AND ALL OTHER TRADES PRIOR TO ROUGH-IN. PROVIDE ALL NECESSARY OFFSETS AND JUNCTION BOXES FOR A COMPLETE CONDUIT SYSTEM.
- C. SURFACE MOUNTED RACEWAYS INDOORS SHALL BE "EMT" TYPE CONDUIT. ALL SURFACE MOUNTED RACEWAYS SHALL BE RUN PARALLEL AND PERPENDICULAR TO BUILDING WALL AND CEILING. FIELD COORDINATE ALL SURFACE RACEWAY PATHS AND DROPS WITH THE EXISTING CONDITIONS AND OTHER TRADES PRIOR TO ROUGH-INS.

**CODED NOTES**

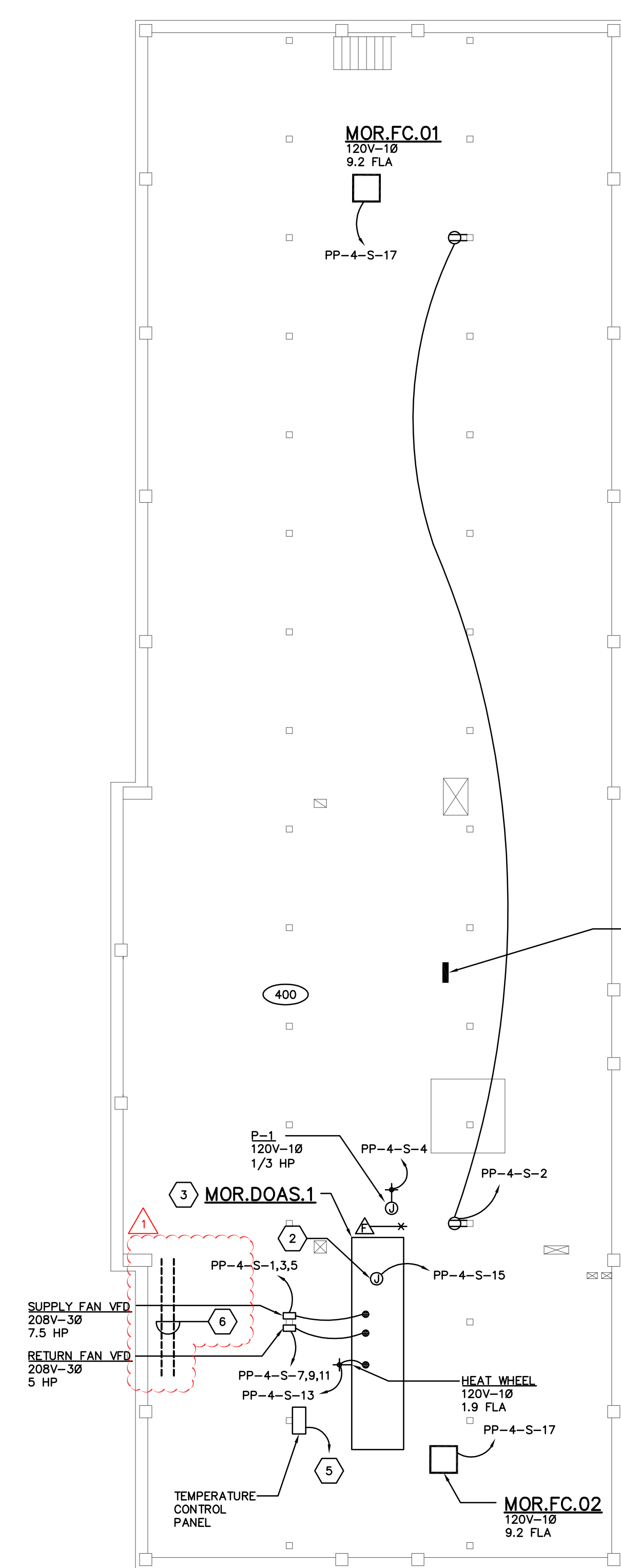
- 1. EXTEND EXISTING LIGHTING CIRCUIT TO THE NEW LIGHTING FIXTURES. MINIMUM WIRE SIZE SHALL BE 2-#12 AND 1-#12 GROUND IN 3/4" CONDUIT.
- 2. PROVIDE 120V CONNECTION TO MECHANICAL EQUIPMENT'S INTEGRAL LIGHTS AND SERVICE RECEPTACLES. VERIFY EXACT LOCATION WITH EQUIPMENT SUPPLIER PRIOR TO ROUGH-IN.
- 3. MAKE POWER CONNECTION TO MECHANICAL EQUIPMENT'S POWER CONNECTION POINTS. THREE REQUIRED: ONE FOR SUPPLY AIR FANS, ONE FOR RETURN AIR FANS, AND ONE FOR HEAT WHEEL. FIELD VERIFY CONNECTION LOCATIONS PRIOR TO ROUGH-IN. FANS PRE-CIRCUITED TO CONTROL PANEL. PANEL INCLUDES W/D'S LABEL VFD'S MOR.DOAS.OX.VFD.OX. WHERE X INDICATES THE DOAS NUMBER AND VFD NUMBER RESPECTIVELY.
- 4. PROVIDE UNISTRUT FRAME STRUCTURE TO MOUNT NEW PANEL TO.
- 5. EXTEND EXISTING 120V CIRCUIT AND DATA CONNECTION FROM EXISTING TEMPERATURE CONTROL PANEL TO NEW TEMPERATURE CONTROL PANEL. MINIMUM WIRE SIZE SHALL BE 2-#12 AND 1-#12 GROUND IN 3/4" CONDUIT. COORDINATE FINAL LOCATION WITH HVAC CONTRACTOR.
- 6. TEMPORARILY RELOCATE EXISTING CABLE-TRAY TO ALLOW INSTALLATION OF NEW DOAS UNITS.



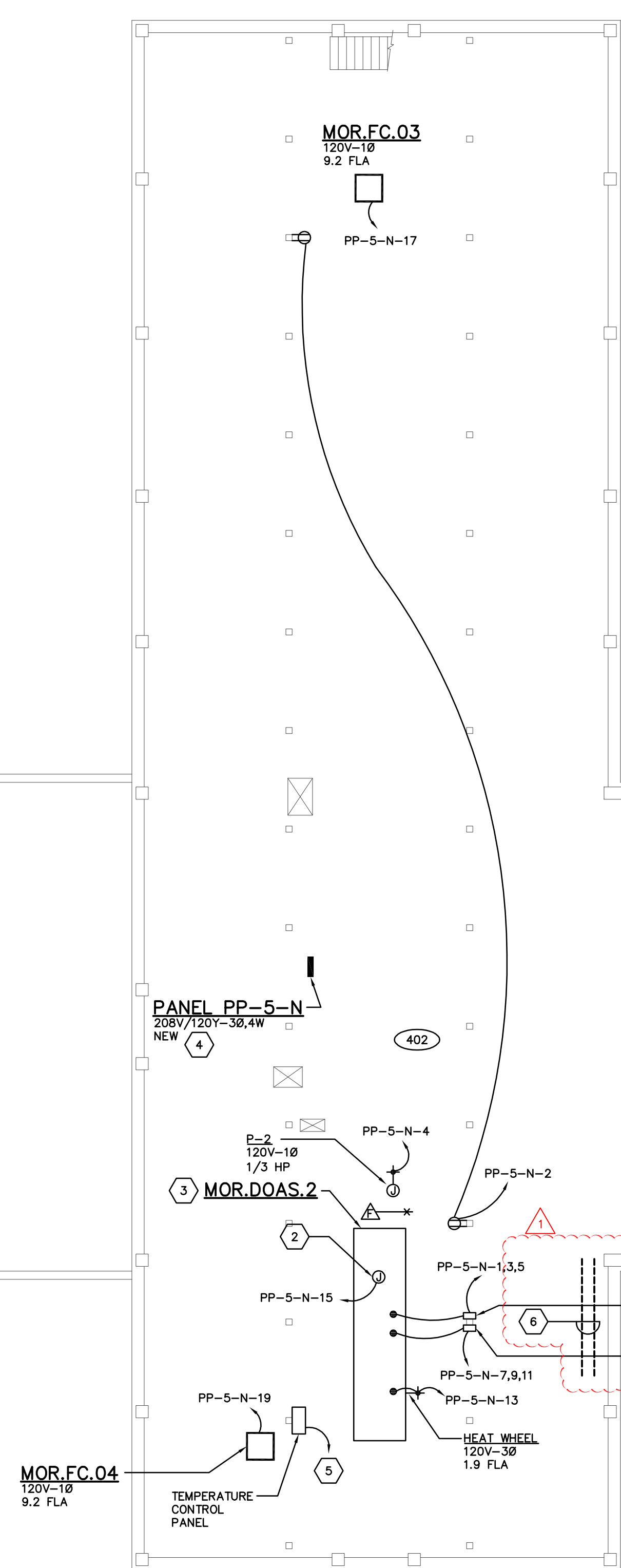
**PARTIAL ATTIC SOUTH LIGHTING PLAN**  
SCALE: 1/8"=1'-0"



**PARTIAL ATTIC NORTH LIGHTING PLAN**  
SCALE: 1/8"=1'-0"

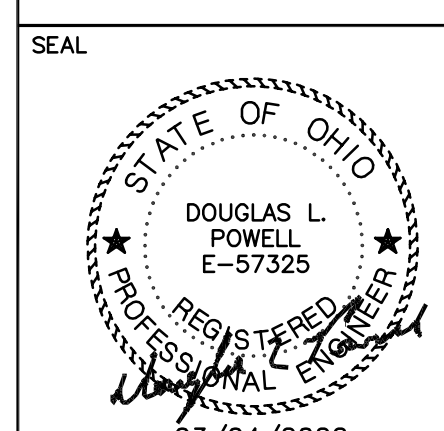


**ATTIC POWER PLAN**  
SCALE: 1/8"=1'-0"



DATE	DESCRIPTION
3-24-22	ADDENDUM 2
3-4-22	ISSUED FOR BID AND PERMIT

E-104-21379.DWG  
ASSOCIATE ENGINEER  
**PRATER Engineering Associates, Inc.**  
6130 Wilcox Road (614) 766 4886  
Dublin, Ohio 43016 FAX: (614) 766 2354



MIAMI UNIVERSITY  
MORRIS HALL  
VENTILATION IMPROVEMENTS

PREPARED FOR  
MIAMI UNIVERSITY  
PHYSICAL FACILITIES DEPARTMENT  
OXFORD, OH

PREPARED BY  
**PRATER ENGINEERING ASSOCIATES**  
6130 WILCOX ROAD; DUBLIN, OHIO 43016

SCALE	DATE	DESIGNED BY	CHECKED BY	SHEET NO.
AS NOTED	3/4/2022	N.GUY	DLP	<b>E-104</b>