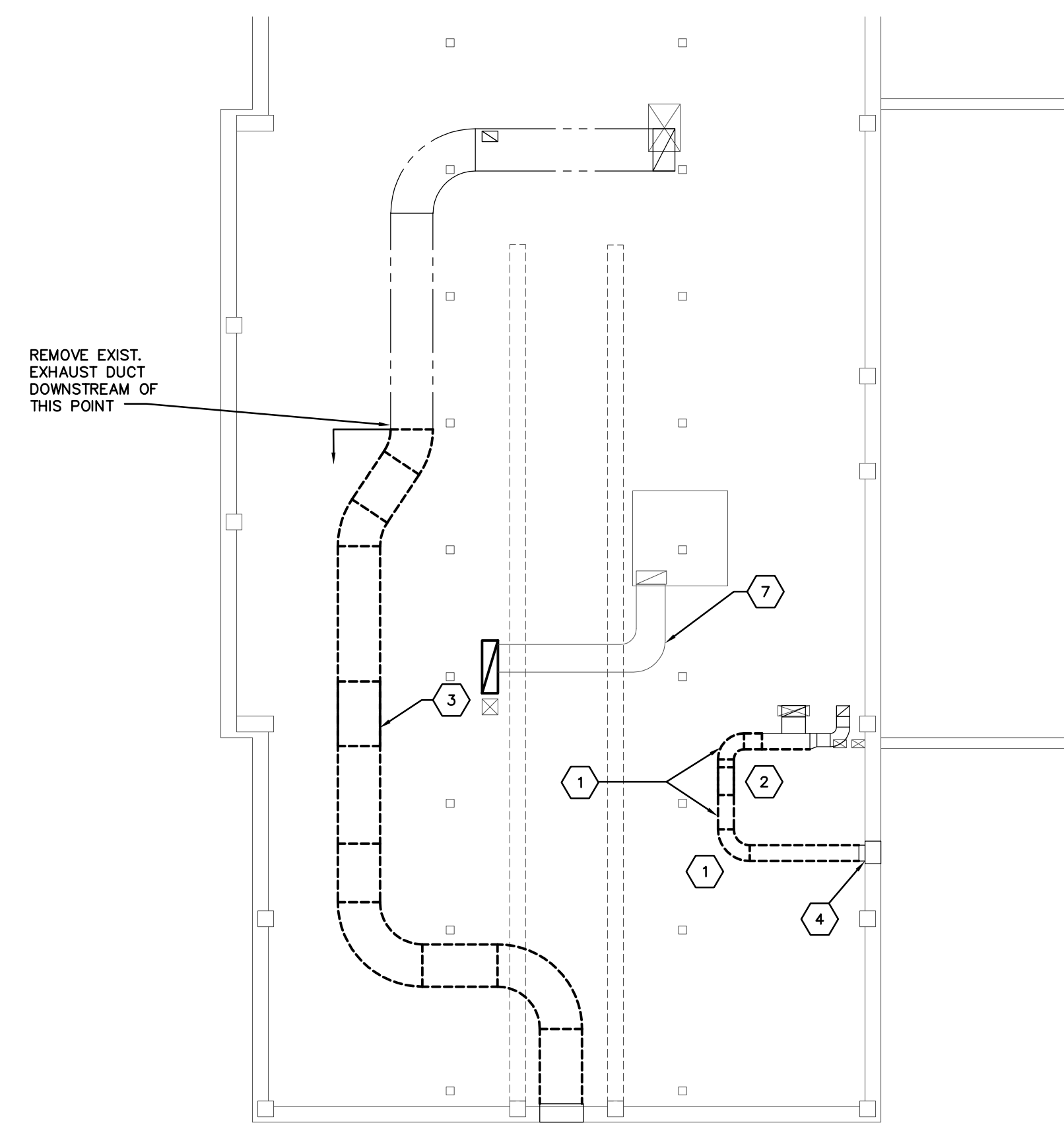


CONSTRUCTION SEQUENCING

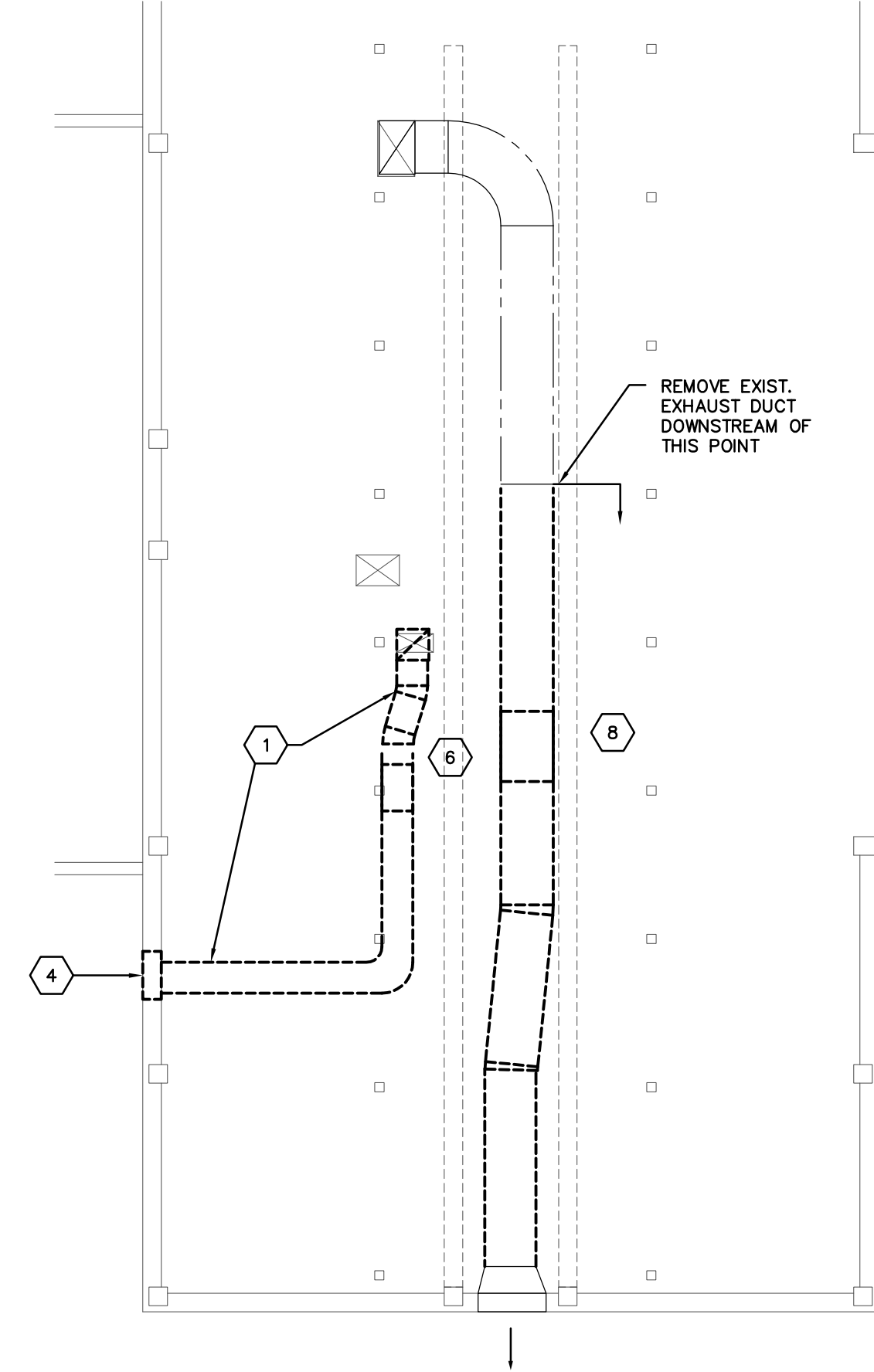
1. EXHAUST SYSTEMS SHALL BE MAINTAINED IN SERVICE UNTIL NEW DOAS UNITS ARE INSTALLED. SECTIONS OF EXIST. EXHAUST DUCTS MAY BE REMOVED TEMPORARILY TO INSTALL NEW DUCTS AND SYSTEMS BUT MUST BE ABLE TO BE REINSTALLED IF NEW DOAS UNITS ARE NOT INSTALLED AND OPERATIONAL BY JULY 22, 2022.

CODED NOTES

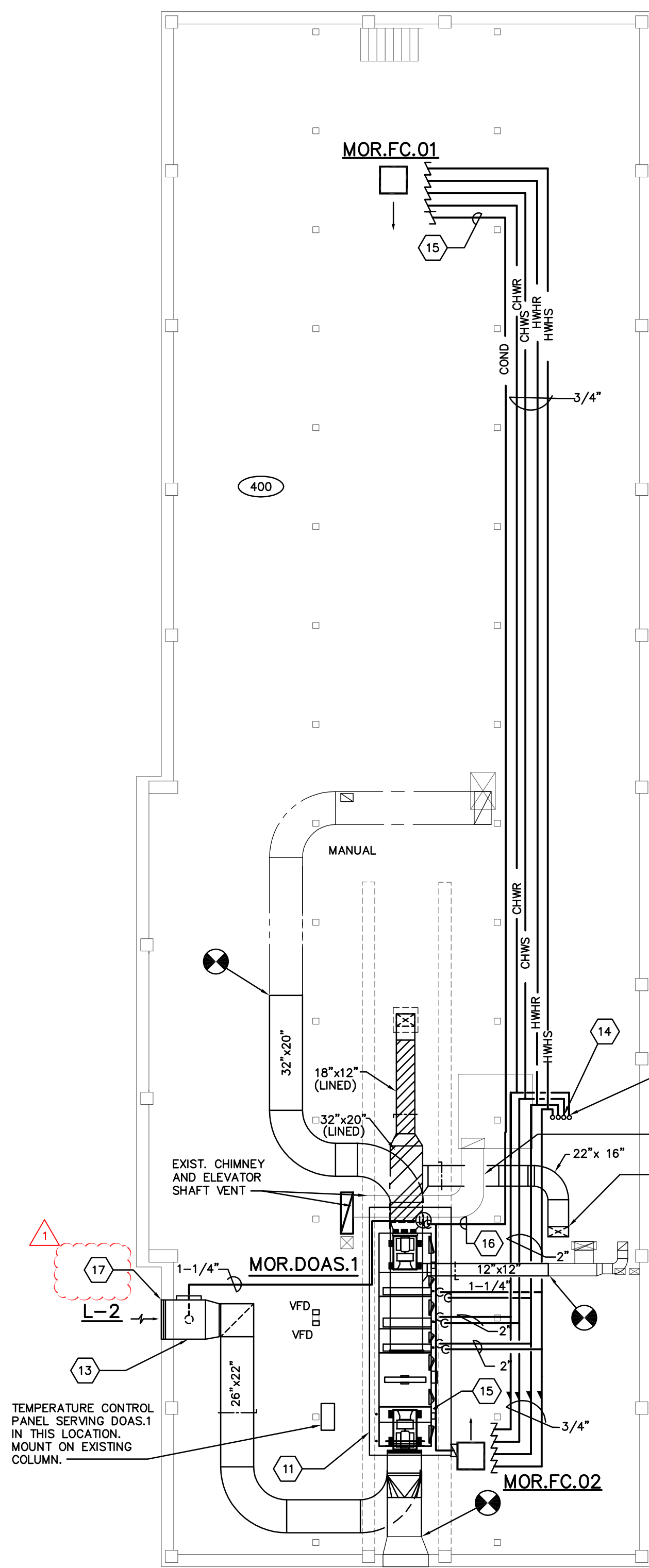
1. REMOVE EXISTING EXHAUST DUCT.
2. REMOVE EXIST. EXHAUST FAN EF-3.
3. REMOVE EXIST. EXHAUST FAN EF-2.
4. CAP EXIST. EXHAUST LOUVER WITH INSULATED SHEET METAL CAP.
5. NOT USED.
6. REMOVE EXIST. EF-5.
7. EXIST DUCT FROM ELEVATOR SHAFT TO CHIMNEY TO REMAIN.
8. REMOVE EXIST. EF-4.
9. NOT USED.
10. NOT USED.
11. PRIOR TO SETTING UNIT: 2-1/2" STEEL CHANNEL CONTAINMENT CURB AROUND UNIT. EPOXY PAINT UNDER UNIT AND ON ALL SIDES OF CONTAINMENT CURB STEEL. SHERWIN-WILLIAMS MACRO-POXY 646 OR EQUAL.
12. RUN 3/4" DRAIN LINE FROM LOUVER PLENUM AND CONNECT TO DOAS UNIT CONDENSATE DRAIN LINE.
13. APPROXIMATELY 36" WIDE x 54" HIGH LOUVER IN EXISTING WINDOW OPENING. PROVIDE 30" DEEP PLENUM WITH 24"x24" ACCESS DOOR.
14. EXTEND PIPING DOWN THROUGH LINEN CLOSET.
15. RUN 1-1/4" DRAIN LINE FROM FAN COIL. CONNECT TO COOLING COIL DRAIN LINE.
16. RUN 1-1/4" DRAIN LINE FROM COOLING COIL TO FLOOR DRAIN LOCATED WITHIN AIR HANDLING UNIT CONTAINMENT CURB.
17. TEMPORARILY REMOVE AND RELOCATE EXISTING DRY SPRINKLER PIPE TO ALLOW NEW AIR HANDLING UNIT SECTIONS TO BE INSTALLED. COORDINATE WITH MIAMI UNIVERSITY.



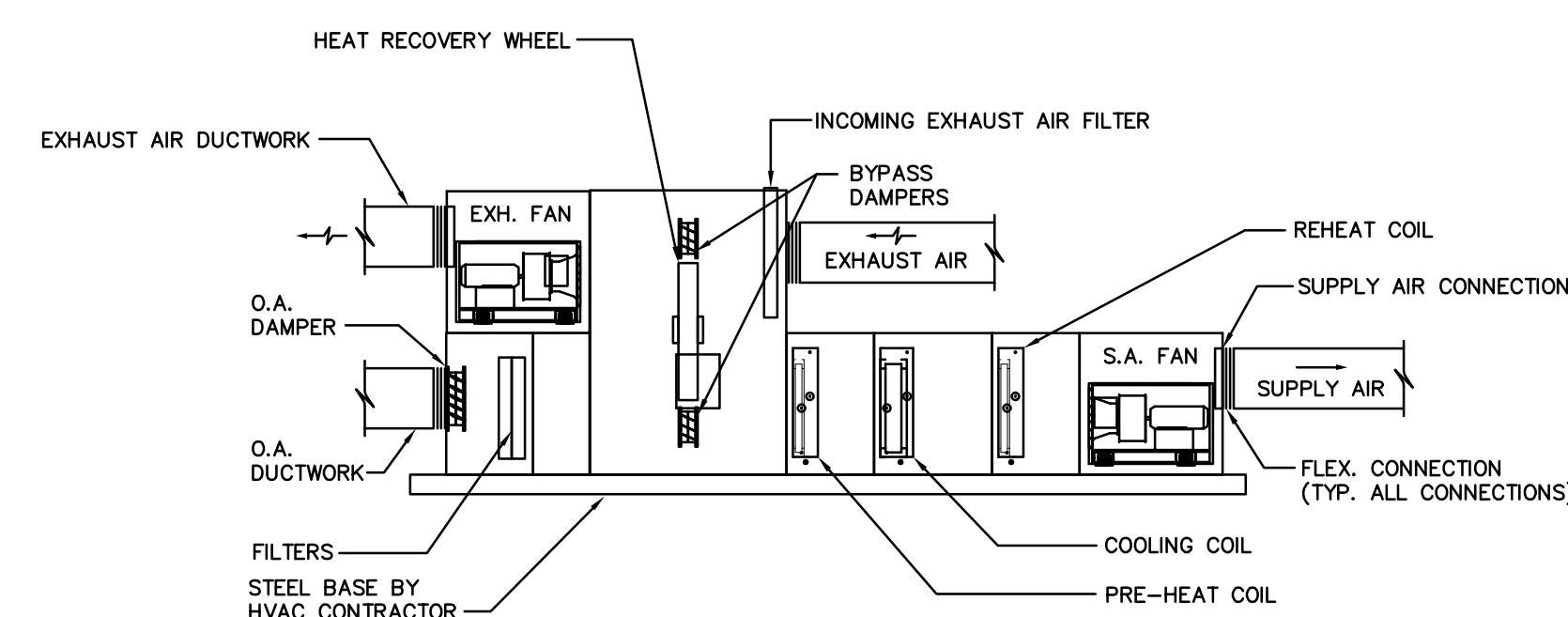
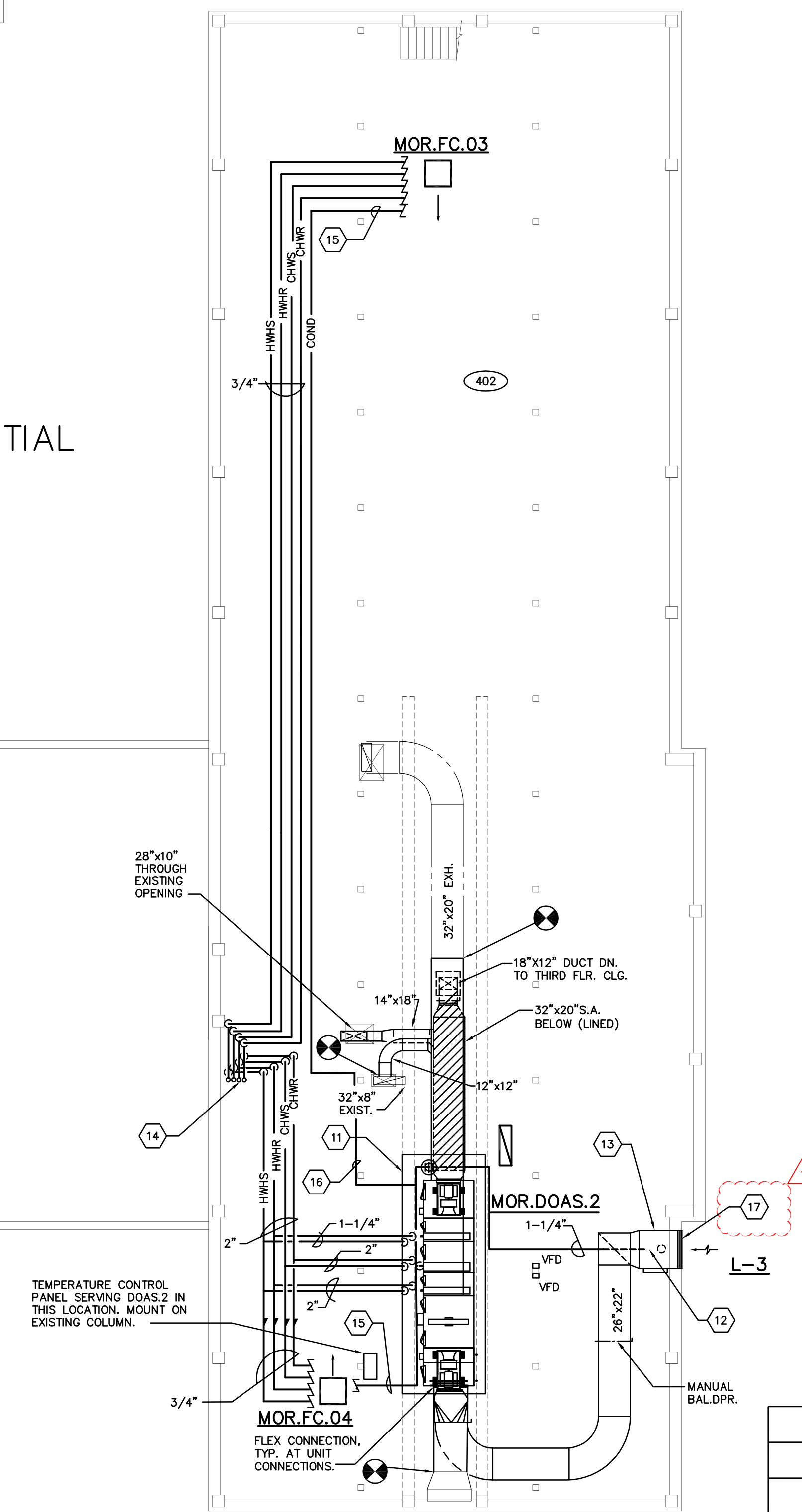
ATTIC SOUTH WING PARTIAL
HVAC DEMO PLAN
SCALE: 1/8"=1'-0"



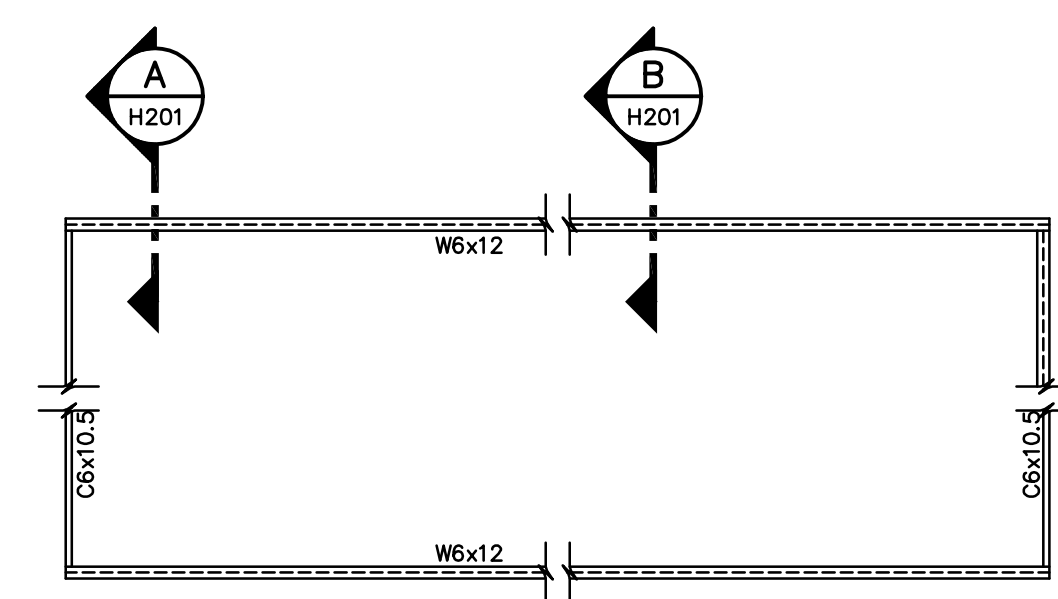
ATTIC NORTH WING PARTIAL
HVAC DEMO PLAN
SCALE: 1/8"=1'-0"



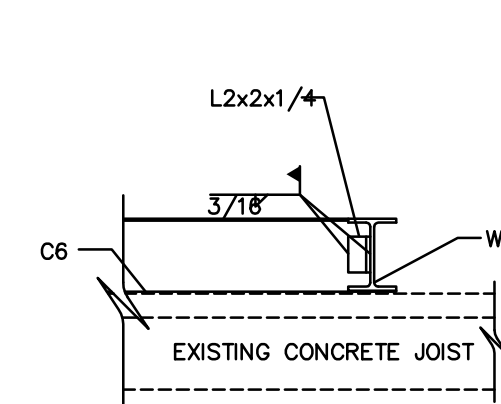
ATTIC
HVAC PLAN
SCALE: 1/8"=1'-0"



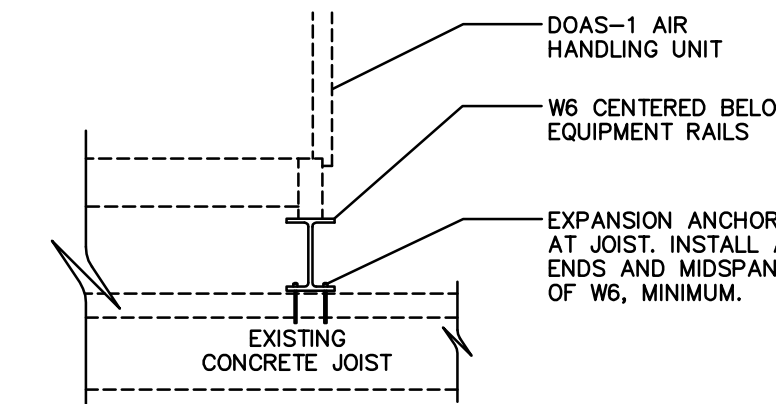
DOAS-1 & 2 DETAIL
SCALE 1/4"=1'-0"



DOAS-1 UNIT SUPPORT
LEVEL SUPPORT BEAMS AND GROUT UNDER VOIDS.



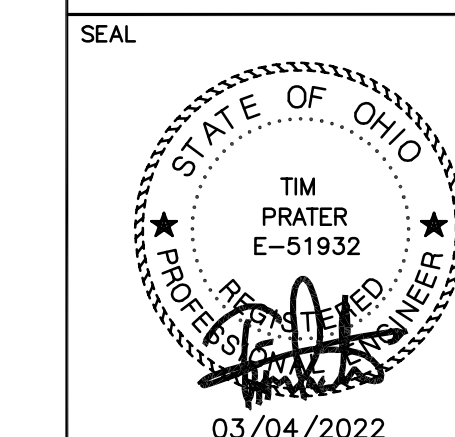
SECTION A
H201



SECTION B
H201

| DATE | DESCRIPTION |
|---------|---------------------------|
| 3-24-22 | ADDENDUM 2 |
| 3-4-22 | ISSUED FOR BID AND PERMIT |

H-104-21379.DWG
ASSOCIATE ENGINEER
PRATER
Engineering Associates, Inc.
6130 Wilcox Road (614) 766 4886
Dublin, Ohio 43018 FAX: (614) 766 2354



MIAMI UNIVERSITY
MORRIS HALL
VENTILATION IMPROVEMENTS

PREPARED FOR
MIAMI UNIVERSITY
PHYSICAL FACILITIES DEPARTMENT
OXFORD, OH

PREPARED BY
PRATER ENGINEERING ASSOCIATES
6130 WILCOX ROAD; DUBLIN, OHIO 43016

| SHEET TITLE | DATE | DESIGNED BY | CHECKED BY | SHEET NO. |
|--------------------|----------|-------------|------------|-----------|
| ATTIC HVAC PLAN | 3/4/2022 | B. OGLE | T. PRATER | H-104 |